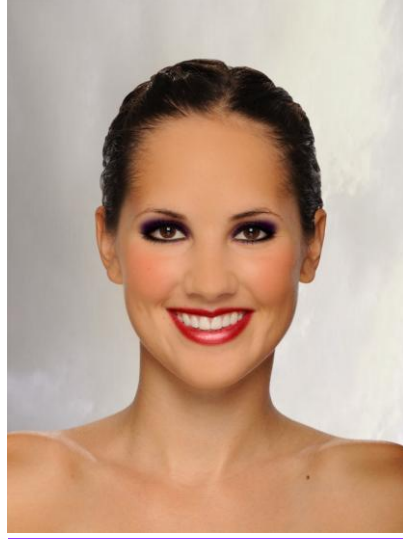


2013 Competitive Make-Up



Precision is the key to success in the competitive dance world. That is why it is so very important that all dancers in a group look identical. Please know I am not saying go out and spend a fortune on make-up but here are some recommendations. We have been working together with Shoppers drug mart in Lacombe so tell them you are from our studio when you go there. If you would like to purchase all the makeup DEPA members are selling premade kits.

FOUNDATION: This will be dancer specific. Try and get a shade that is same color as skin tone or a slight bit darker.

LIPS: Because the stage lights really suck out the color we want a deep red on all dancers. If you have a lipstain or another lipstick that is close to this color that is fine:
Maybelline-645 Red Revival

CHEEKS- A nice rosy cheek emphasizes facial expressions. This also will depend on skin tone how dark you go. Here are some suggestions
Cover Girl- 220Blush (3 pan)



EYES- This will be the most important part of the stage face. A dark eyeliner will be added to the whole eye but more on the outside corners. Eyeshadow will be added with the darker purple near the lash and then a lighter shade on top. Shades of grey can also be used to make the eye pop. The eye will be finished with a set of false eyelashes. These are key for making the eyes pop on stage.

Maybelline-



Eyeshadow: Amethyst Smokes o6Q

Eyelashes- Quo 808 or 806 . If these are not available a nice full eyelash set will work.

